



PROJECT TITLE:  
 St Josephs Catholic School, Te Kuiti.  
 Development Plan  
 Development Design

DRAWING TITLE:  
 Existing Site Plan

SCALE: 1:500 @A3

DATE: 25/06/2018



JOB NO: 5763    DRAWN: CH    CHECKED: MO

FILE: 5763 Te Kuiti St Jos Strategic Development Design 11 04 2018.pln

Gisler Architects  
 118 Alexandra Street, P O Box 297  
 Te Awamutu 3840  
 Phone: 07 870 5200

SHEET: **101**

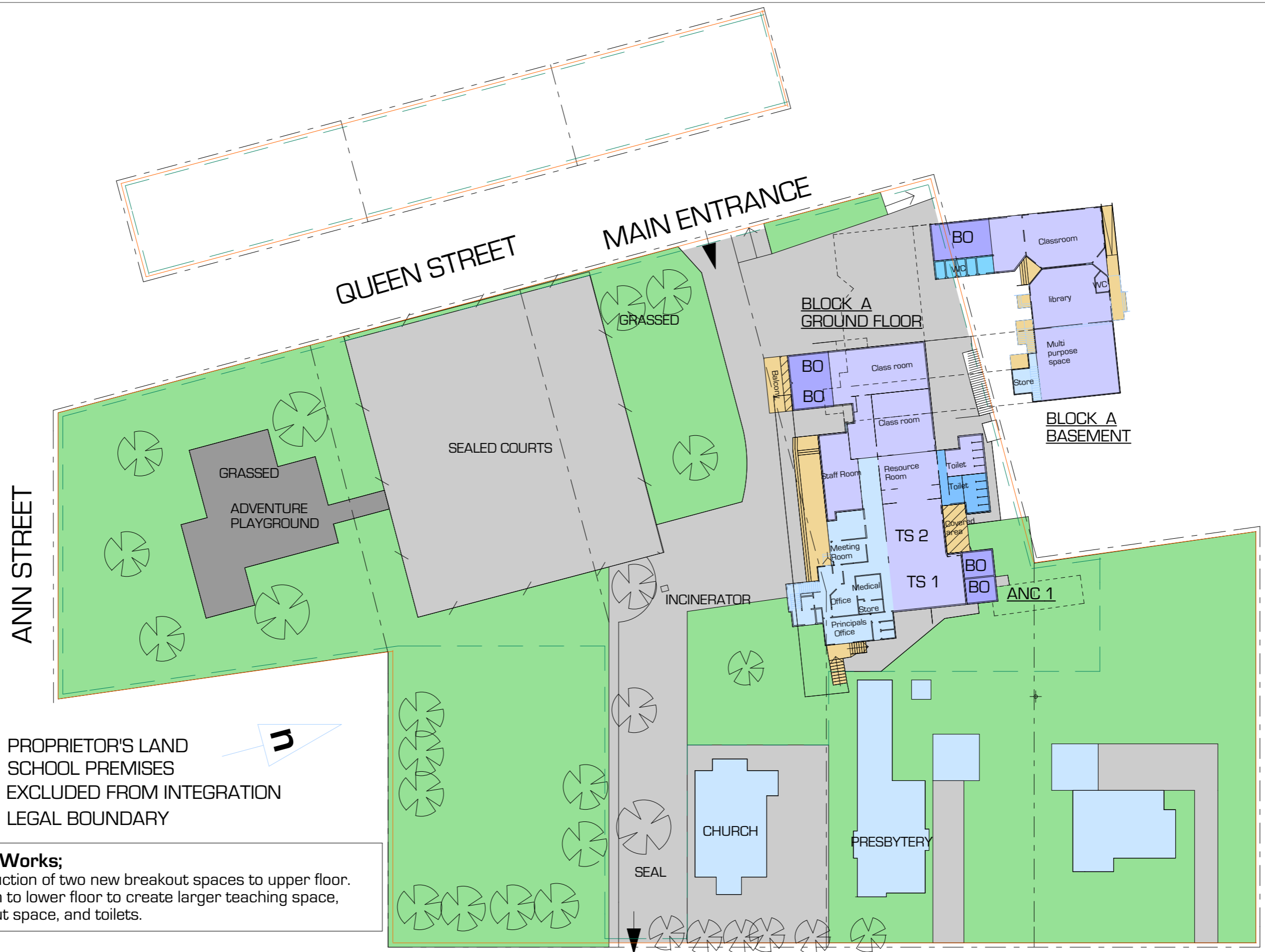


PROJECT TITLE:  
St Josephs Catholic School, Te Kuiti.  
Development Plan  
Development Design

DRAWING TITLE:  
Stage 1 Works  
SCALE: 1:500 @A3  
DATE: 25/06/2018



JOB NO: 5763 DRAWN: CH CHECKED: MO  
FILE: 5763 Te Kuiti St Jos Strategic Development Design 11 04 2018.pln  
Gisler Architects  
118 Alexandra Street, P O Box 297  
Te Awamutu 3840  
Phone: 07 870 5200  
SHEET: 102



- PROPRIETOR'S LAND
- SCHOOL PREMISES
- /- EXCLUDED FROM INTEGRATION
- - - LEGAL BOUNDARY

**Stage 2 Works;**

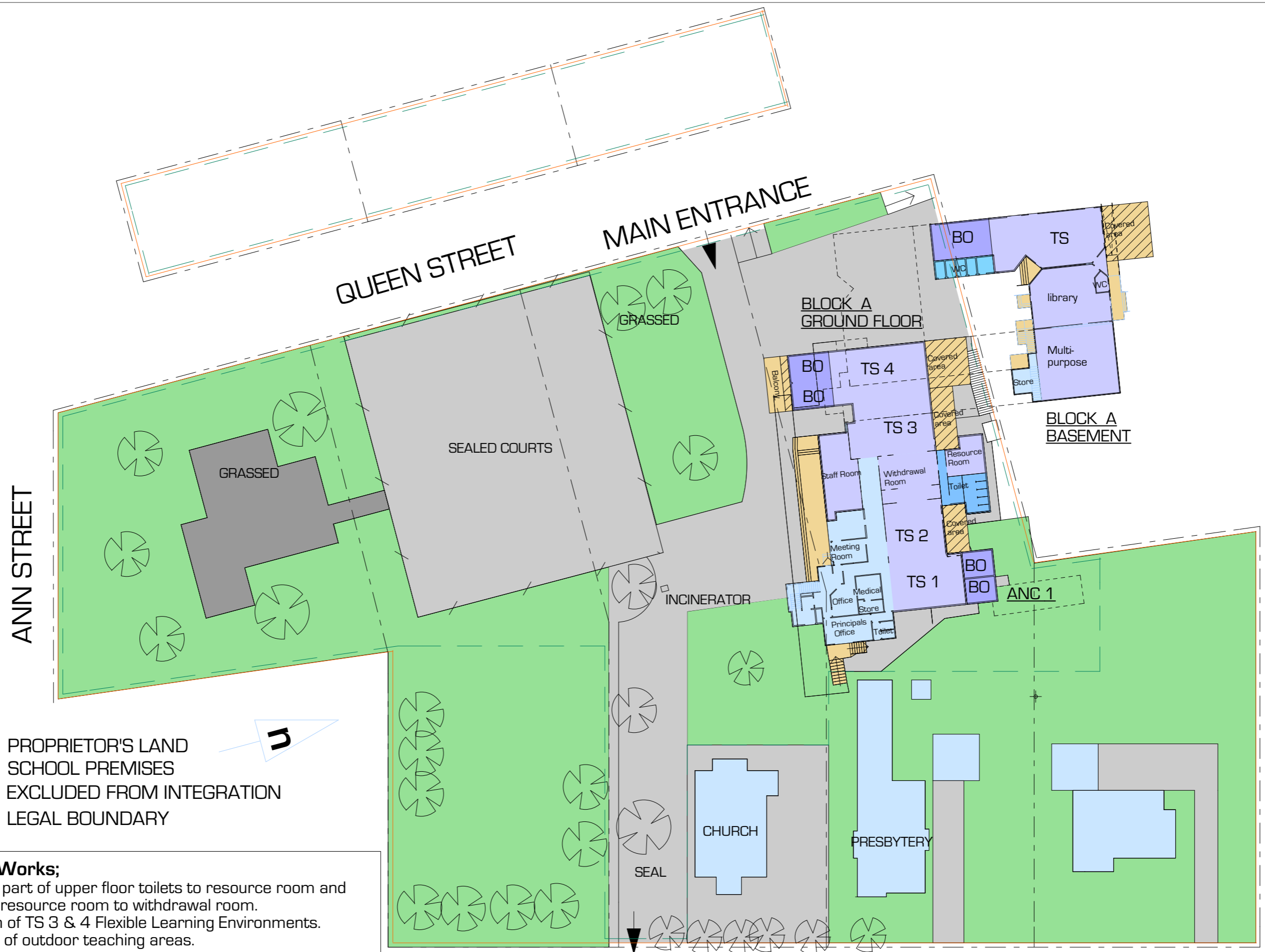
- Construction of two new breakout spaces to upper floor.
- Addition to lower floor to create larger teaching space, breakout space, and toilets.

PROJECT TITLE:  
St Josephs Catholic School, Te Kuiti.  
Development Plan  
  
Development Design

DRAWING TITLE:  
Stage 2 Works  
  
SCALE: 1:500 @A3      DATE: 25/06/2018

**Gisler**  
ARCHITECTS 2017  
[www.gisler-architects.co.nz](http://www.gisler-architects.co.nz)

JOB NO: 5763    DRAWN: CH    CHECKED: MO  
FILE: 5763 Te Kuiti St Jos Strategic Development Design 11 04 2018.pln  
Gisler Architects  
118 Alexandra Street, P O Box 297  
Te Awamutu 3840  
Phone: 07 870 5200  
SHEET: **103**



- PROPRIETOR'S LAND
- SCHOOL PREMISES
- // EXCLUDED FROM INTEGRATION
- - - LEGAL BOUNDARY

**Stage 3 Works;**

- Convert part of upper floor toilets to resource room and convert resource room to withdrawal room.
- Creation of TS 3 & 4 Flexible Learning Environments.
- Addition of outdoor teaching areas.

PROJECT TITLE:  
St Josephs Catholic School, Te Kuiti.  
Development Plan  
  
Development Design

DRAWING TITLE:  
Stage 3 Works  
  
SCALE: 1:500 @A3      DATE: 25/06/2018

**Gisler**  
ARCHITECTS 2017  
[www.gisler-architects.co.nz](http://www.gisler-architects.co.nz)

JOB NO: 5763    DRAWN: CH    CHECKED: MO  
FILE: 5763 Te Kuiti St Jos Strategic Development Design 11 04 2018.pln  
Gisler Architects  
118 Alexandra Street, P O Box 297  
Te Awamutu 3840  
Phone: 07 870 5200  
SHEET: **104**



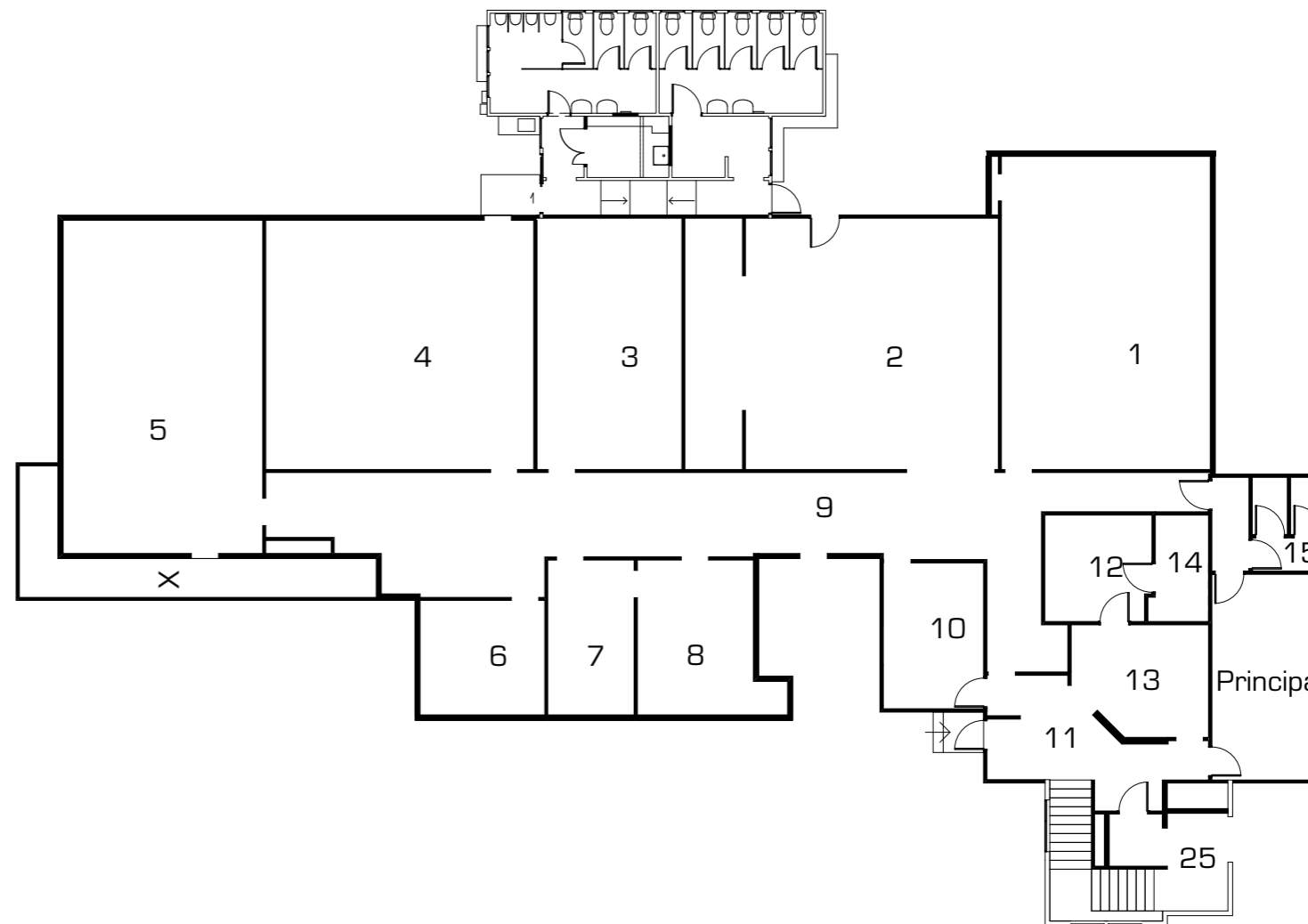
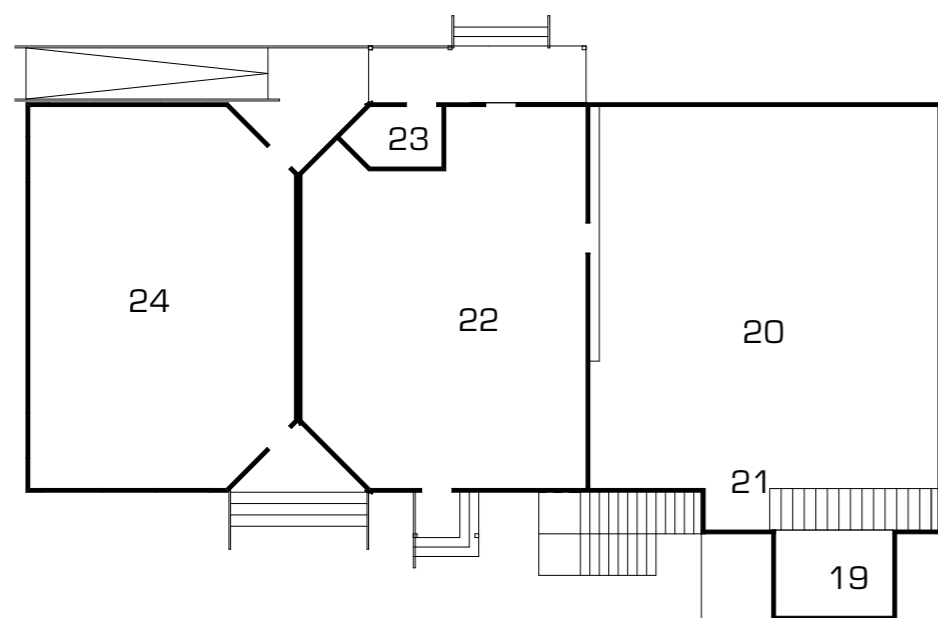
PROJECT TITLE:  
St Josephs Catholic School, Te Kuiti.  
Development Plan  
Development Design

DRAWING TITLE:  
Stage 4 Works  
SCALE: 1:500 @A3  
DATE: 25/06/2018

**Gisler**  
ARCHITECTS 2017  
www.gisler-architects.co.nz

JOB NO: 5763 DRAWN: CH CHECKED: MO  
FILE: 5763 Te Kuiti St Jos Strategic Development Design 11 04 2018.pln  
Gisler Architects  
118 Alexandra Street, P O Box 297  
Te Awamutu 3840  
Phone: 07 870 5200  
SHEET: **105**





PROJECT TITLE:  
 St Josephs Catholic School, Te Kuiti.  
 Development Plan  
 Development Design

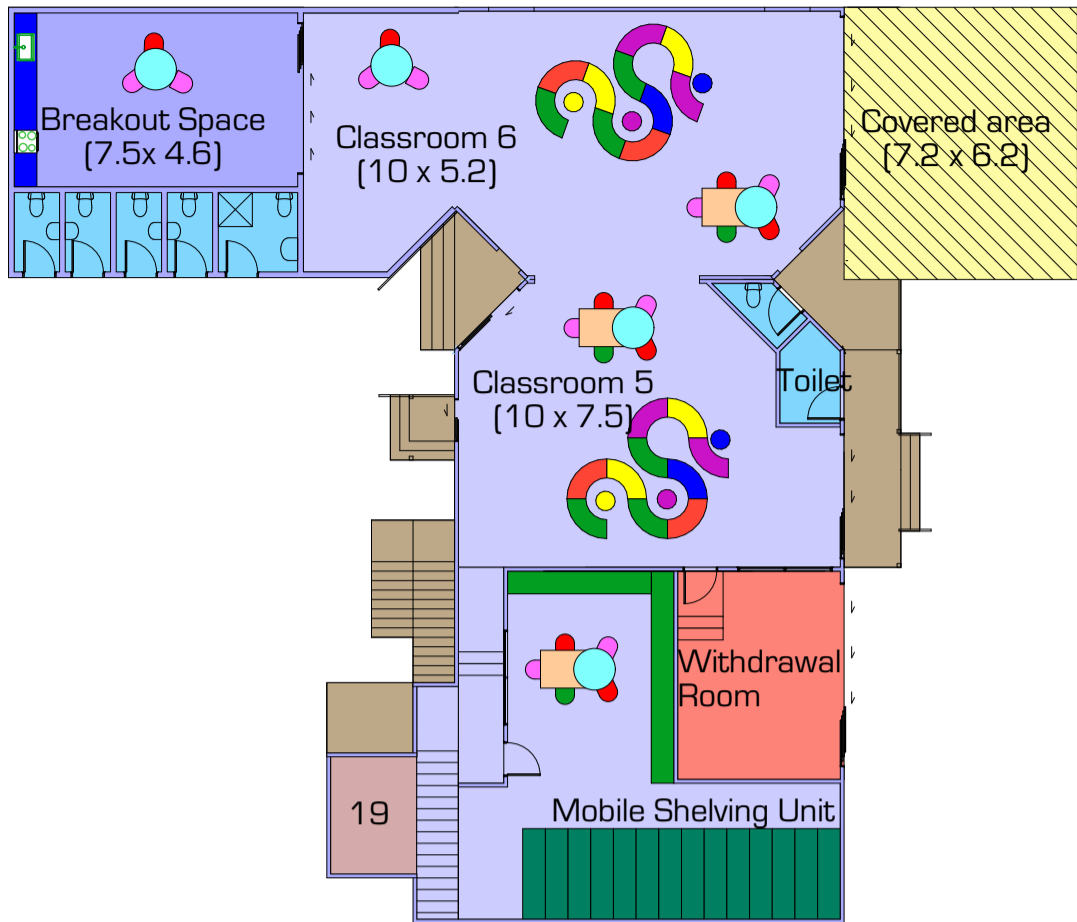
DRAWING TITLE:  
 Existing Floor Plan

SCALE: 1:200 @A3

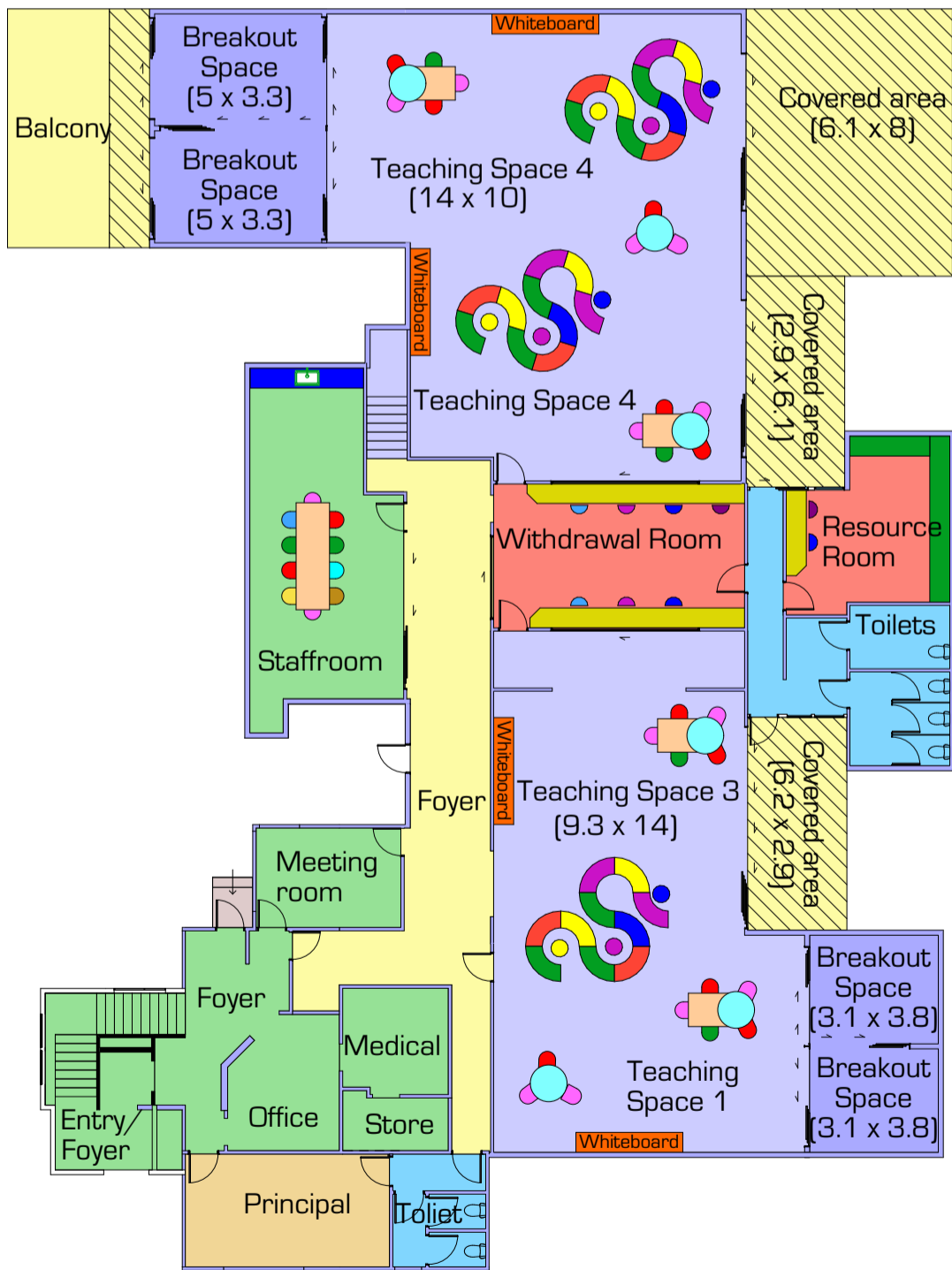
DATE: 25/06/2018



JOB NO.: 5763 DRAWN: CH CHECKED: MO  
 FILE: 5763 Te Kuiti St Jos Strategic Development Design 11 04 2018.pln  
 Gisler Architects  
 118 Alexandra Street, P O Box 297  
 Te Awamutu 3840  
 Phone: 07 870 5200  
 SHEET: 106



**Upper Floor**



**Lower Floor**

PROJECT TITLE: <b>St Josephs Catholic School, Te Kuiti.          Development Plan</b>	DRAWING TITLE: <b>Proposed Plan</b>	 www.gisler-architects.co.nz	DRAWN: CH      CHECKED: MO JOB NO.: 5763      FILE: 5763 Te Kuiti St Jos Strategic Development Design
Development Design	SCALE: 1:200 @A3      DATE: 25/06/2018		Gisler Architects 118 Alexandra Street, P O Box 297 Te Awamutu 3840 Phone: 07 870 5200